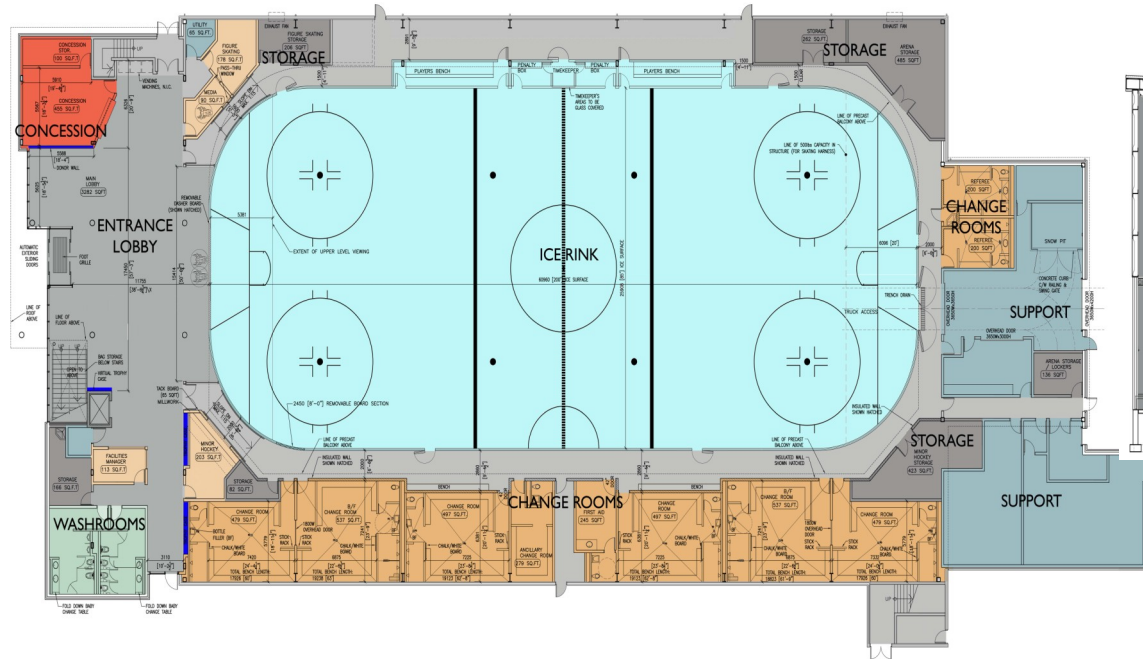


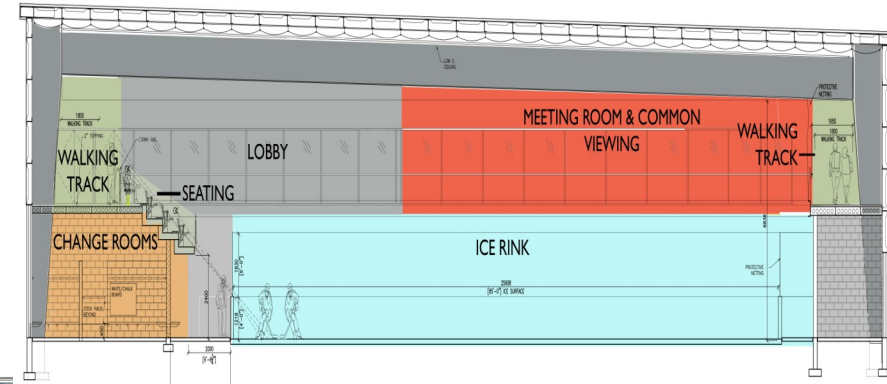
**CAYUGA ARENA**  
Cayuga, ON

**EXAMPLE PROJECTS - 8**  
Coordination Architect

This 5,124 m2 single-pad ice arena and community centre accommodates a 449 spectator seat arena and a 156 m2 community room, including 6 change rooms of which 2 are barrier-free. The project is targeted for LEED silver certification. Construction Cost \$7,000,000

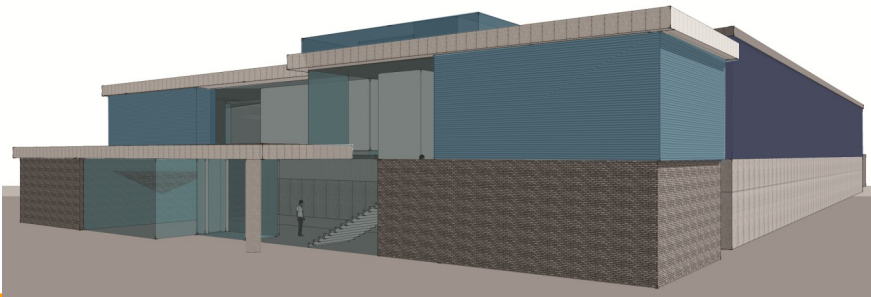


Ground Floor Plan

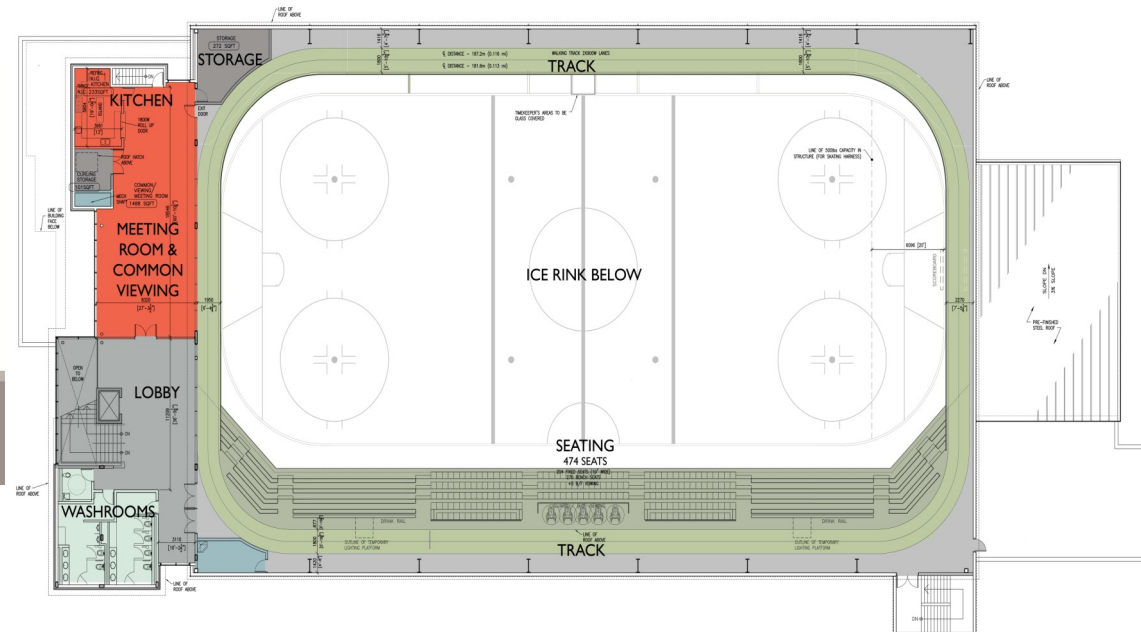


Longi-

Upper Floor Plan



3D Model

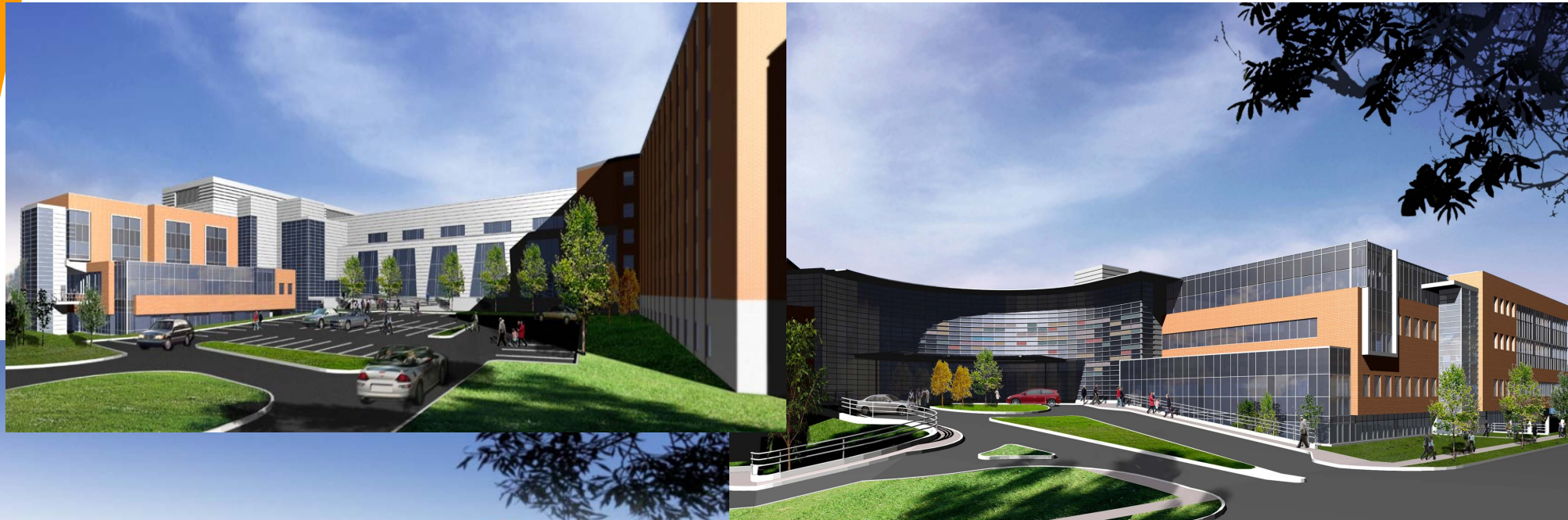


**JURAVINSKI HOSPITAL REDEVELOPMENT**  
Hamilton, ON

**EXAMPLE PROJECTS - 9**  
Coordination Architect



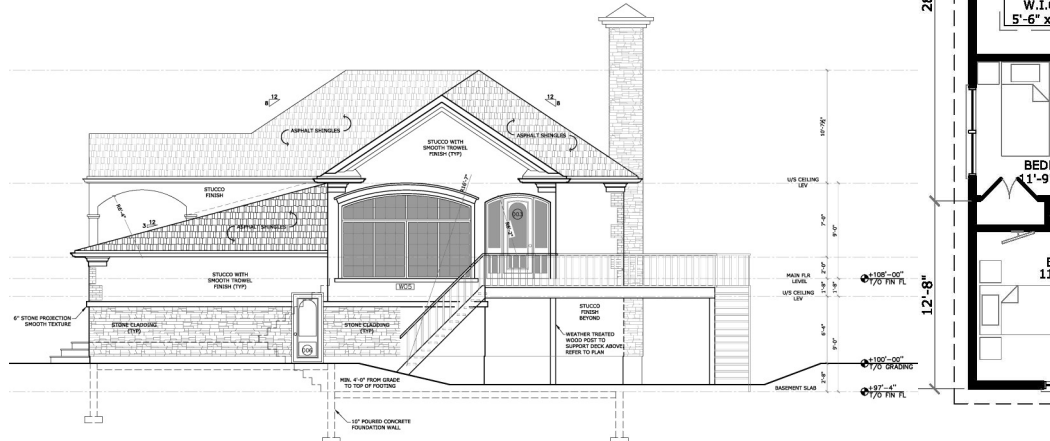
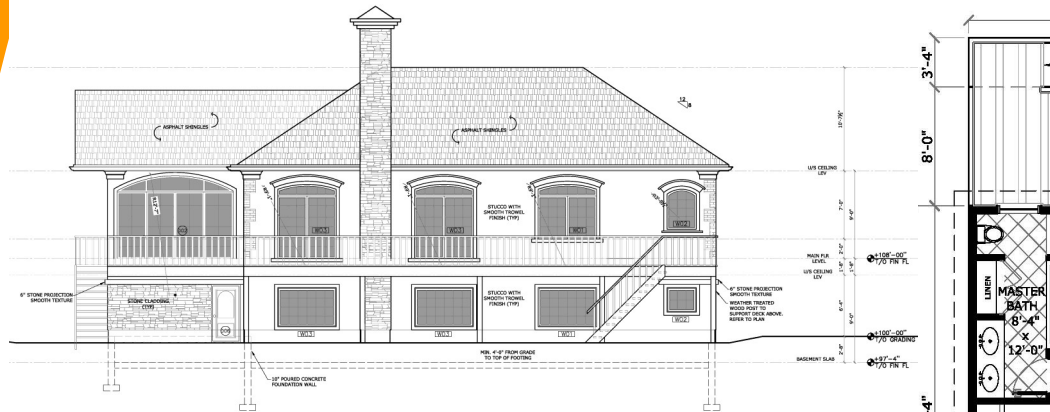
This project redeveloped the existing Henderson Hospital (now Juravinski) east of the 90 Wing. Included in the program were expanded areas for diagnostic imaging, surgery, emergency, coronary care, and clinics for ambulatory care/diabetes and pre-operative assessment. Also included in the project were patient care clinics for haematology, palliative care and oncology as well as support services including laboratories, pharmacy, meeting space, customer services, and human resources. Apart from being a complex program, a key aspect of the design was the phasing strategy for the construction of the addition, which included temporary facilities for the hospital to maintain uninterrupted operation throughout the construction process. Construction Cost \$180,000,000



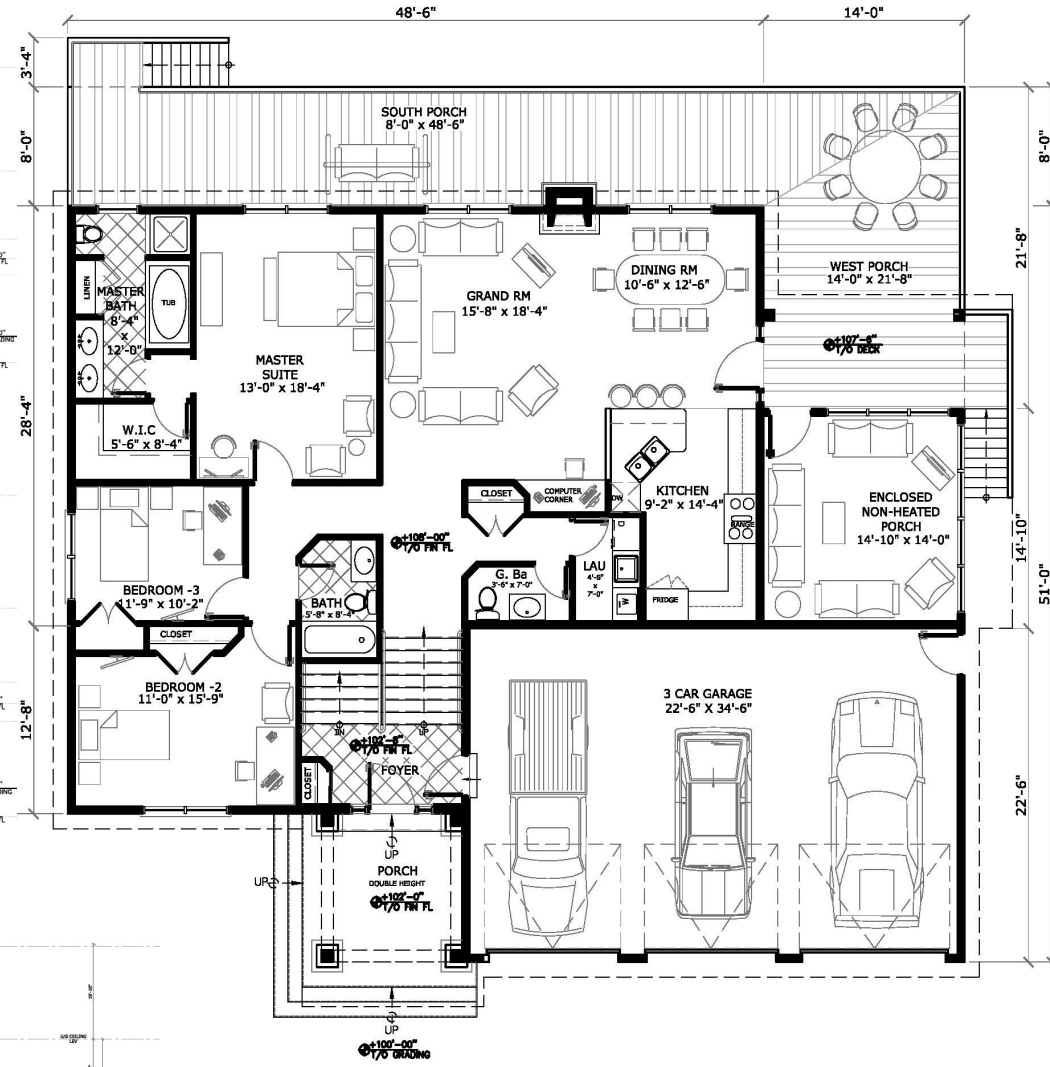
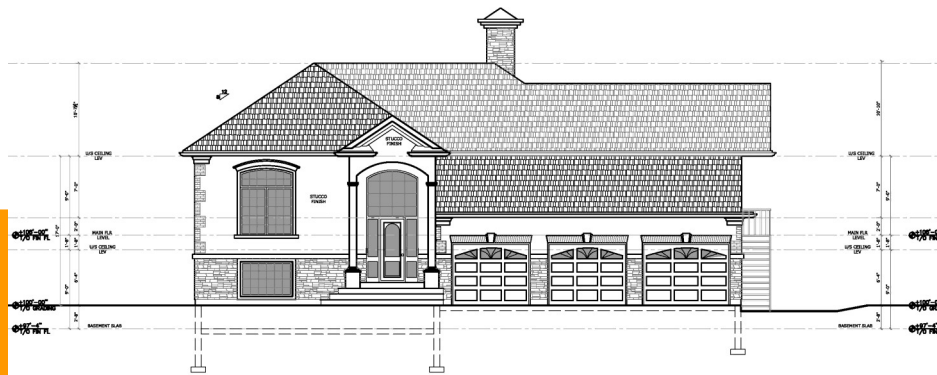
**Diana and Gary Dyck Residence  
Altona, MB**

**EXAMPLE PROJECTS - 10  
Project Architect**

A private luxurious raised Bungalow Residence consists of Master Bedroom, Guest Bedroom, Reception Hall, three car garage and Kitchen in main level. Basement will have Theatre, another Guest suite  
Construction Cost \$380,000



Eleva-

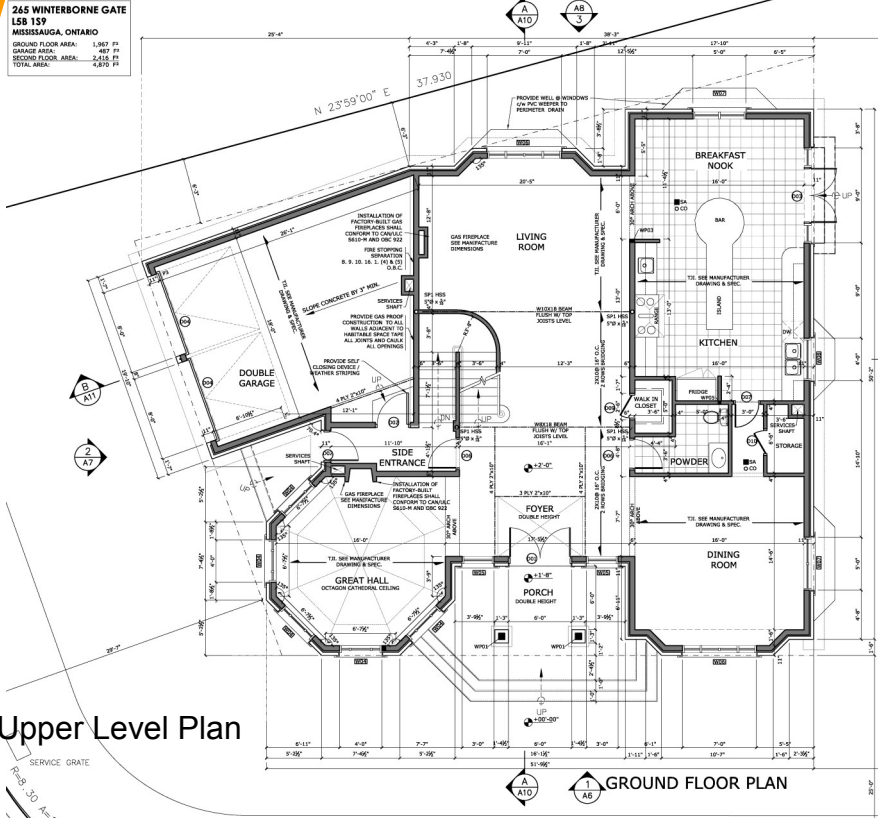


Main Level Plan

**George Sokkar Residence**  
Mississauga, ON

**EXAMPLE PROJECTS - 11**  
Project Architect

A private luxurious two story Residence consists of Master Bedroom, three Bedrooms, Library, Family Hall in upper level., Reception Hall, Dining Hall, Office, Family Hall. Kitchen and two car garage in main level. Basement will have Theatre, another Guest suite  
Construction Cost \$890,000



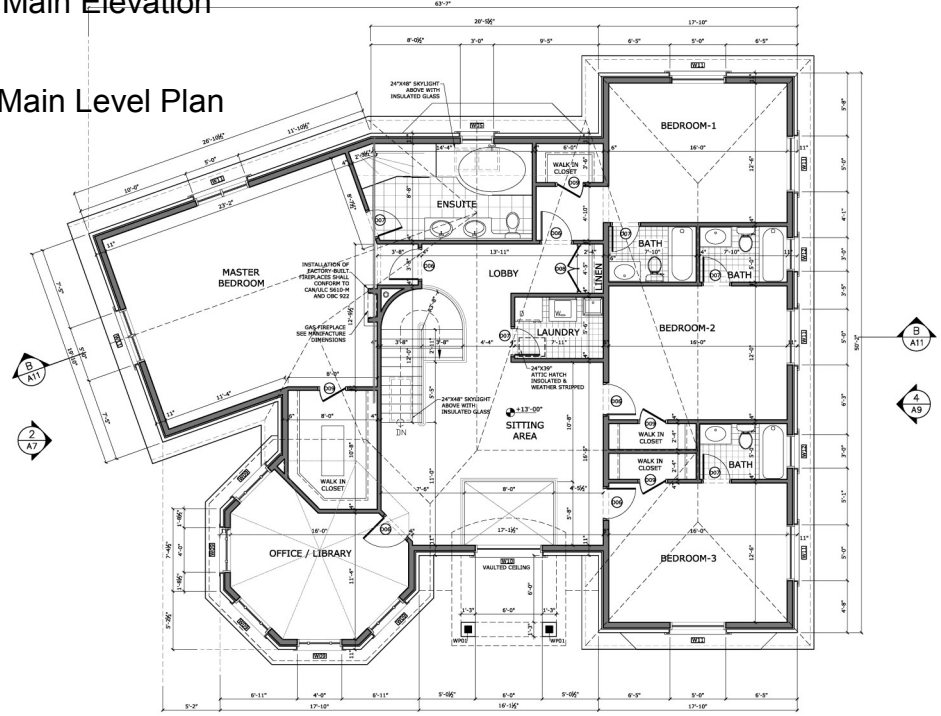
Upper Level Plan

Side Elevation



Main Elevation

Main Level Plan



Amigos Development Inc

Newmarket, ON

**EXAMPLE PROJECTS - 12**  
**Project Architect**

A private luxurious three units development. Brentwood Model consists of two storey Residence consists of Master Bedroom, three Bedrooms, Family Hall in upper level., Reception Hall, Dining Hall, Family Hall. Kitchen and two car garage in main level. Total Construction Cost \$2,200,000



Back Elevation



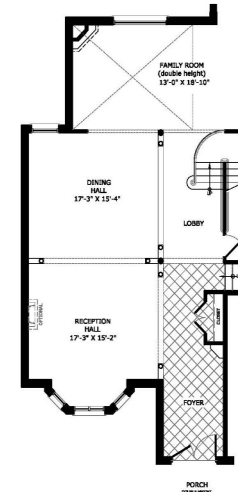
Main Elevation

Side Elevation

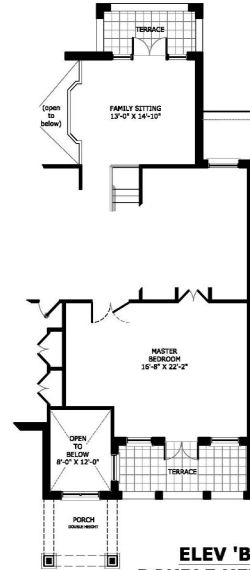


WEST ELEVATION

Brentwood Model

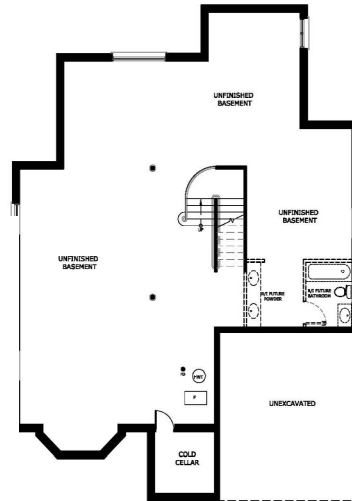


Plans Options

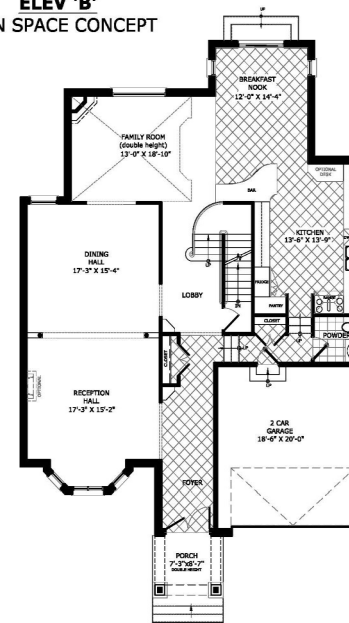


**ELEV 'B'**  
**DOUBLE HEIGHT**  
**ENTRANCE**

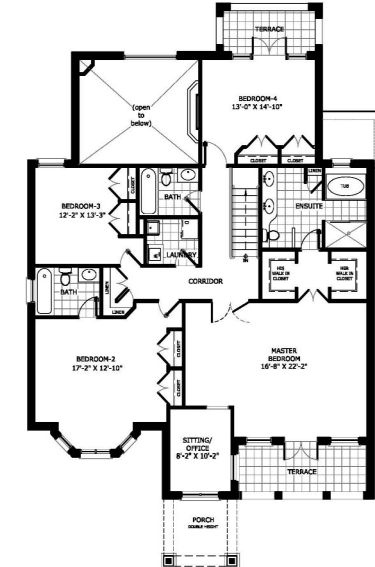
**ELEV 'B'**  
**OPEN SPACE CONCEPT**



**BASEMENT FLOOR**



**GROUND FLOOR**  
**ELEV 'A'**



**SECOND FLOOR**  
**ELEV 'A'**

**Amigos Development Inc**  
**Newmarket, ON**

**EXAMPLE PROJECTS - 13**  
**Project Architect**

A private luxurious three units development. Hillcrest Model consists of Raised Bungalow style Residence consists of Master Bedroom, two Bedrooms, Family Hall, Reception Hall, Dining Hall, Family Hall. Kitchen and two car garage in main level. Total Construction Cost \$2,200,000



**Hillcrest Model**

Plans



**SOUTH ELEVATION**

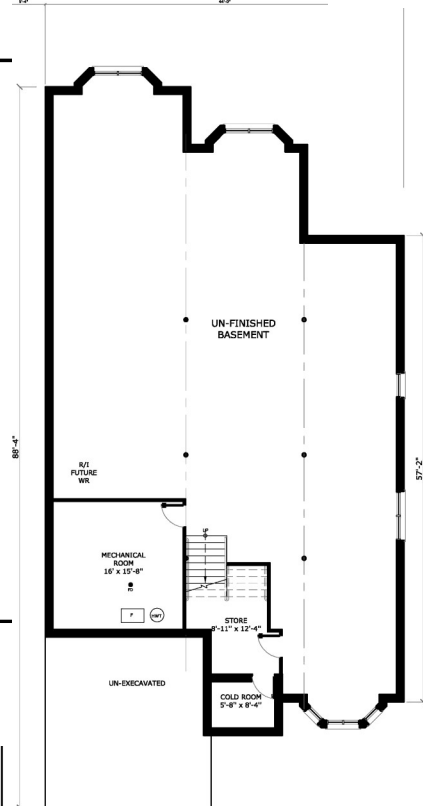


**NORTH ELEVATION**

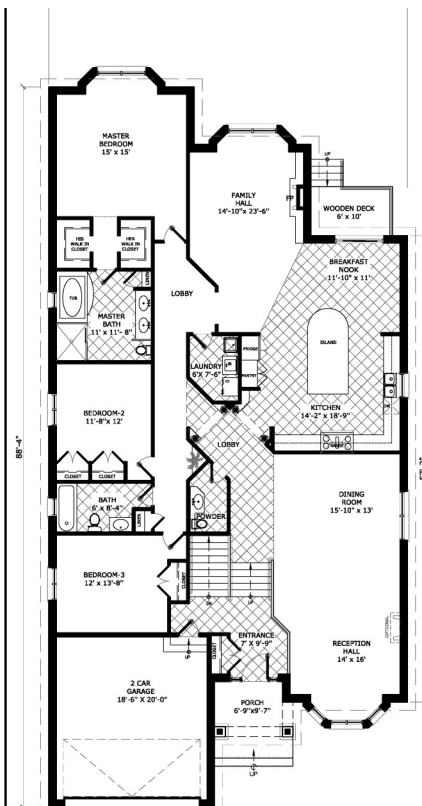
Main Elevation



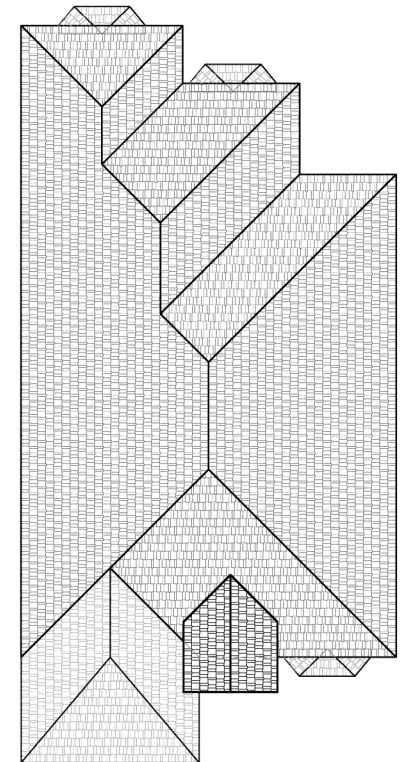
**EAST ELEVATION**



**BASEMENT FLOOR**



**MAIN FLOOR  
ELEV. 'A'**



**ROOF FLOOR**

**Amigos Development Inc  
Newmarket, ON**

**EXAMPLE PROJECTS - 14  
Project Architect**

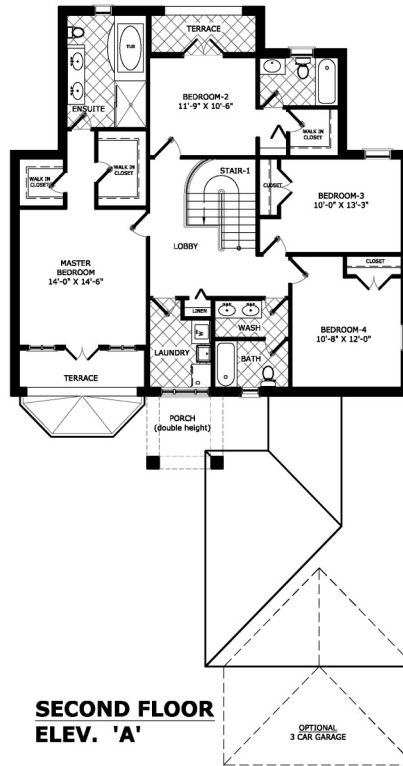
A private luxurious three units development. Brentwood Model consists of two storey Residence consists of Master Bedroom, three Bedrooms, Family Hall in upper level., Reception Hall, Dining Hall, Family Hall. Kitchen and two car garage in main level. Total Construction Cost \$2,200,000



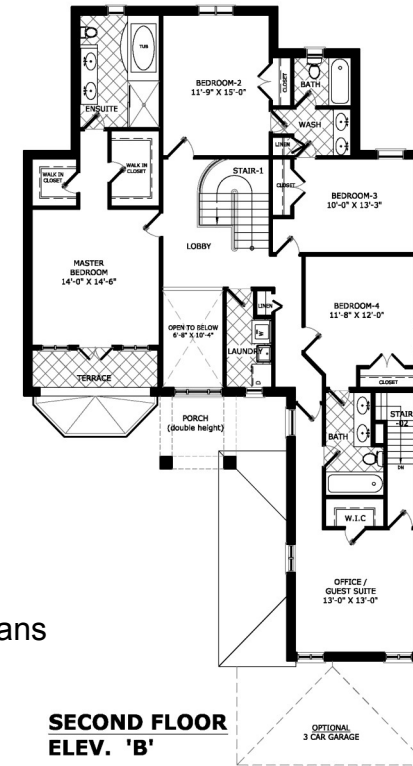
**Madison Model**



Main Elevation

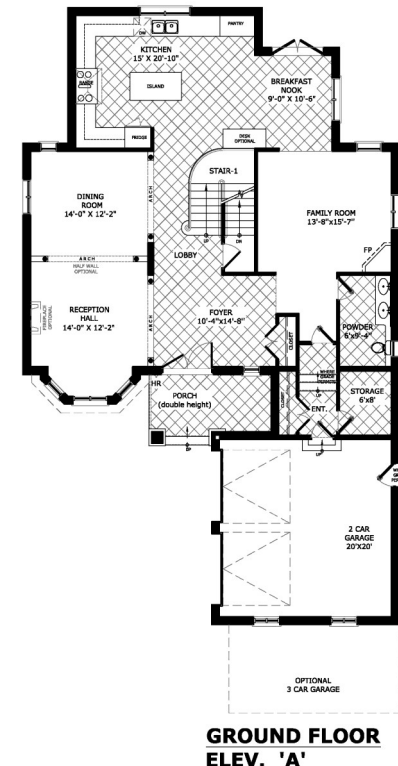


**SECOND FLOOR  
ELEV. 'A'**

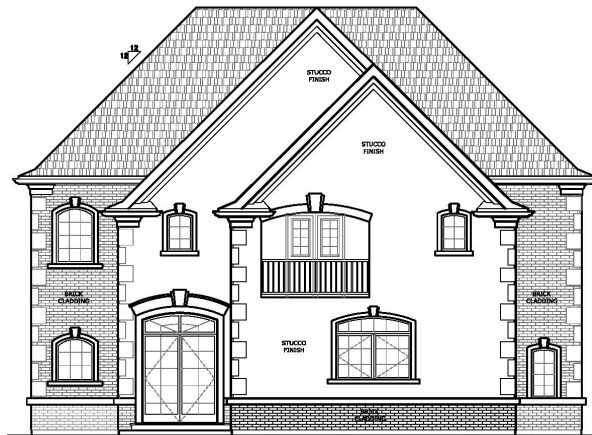


Plans

**SECOND FLOOR  
ELEV. 'B'**



**GROUND FLOOR  
ELEV. 'A'**



Back Elevation



Side Elevation